

# ***Installation Manual***

***wvSuite for iMIS***

**By:**



191 N. Wacker Dr. #1400  
Chicago, IL 60606  
[mcgladrey.com/imis](http://mcgladrey.com/imis)

# wvSuite Installation Guide

*Version 1.0*

This manual is written for technical staff who will be performing the install of wvSuite.

Copyright © 2012 by McGladrey LLP

All rights reserved.

Updates may be made to this documentation and incorporated into later editions.

## Notice

This user guide and the software it describes are furnished under a license agreement. The software may be used and copied only in accordance with the terms of the agreement. No part may be copied, transmitted, or reproduced in any form without written permission from McGladrey LLP.

McGladrey LLP and the program authors have no liability to the purchaser or any other entity, except as provided in the license agreement permitting your use of this software, with respect to any liability, loss, damage caused, directly or indirectly, by this software, including but not limited to any interruptions in service, loss of business, anticipatory profits, or consequential damages resulting from the use of or operation of this software.

## Trademarks

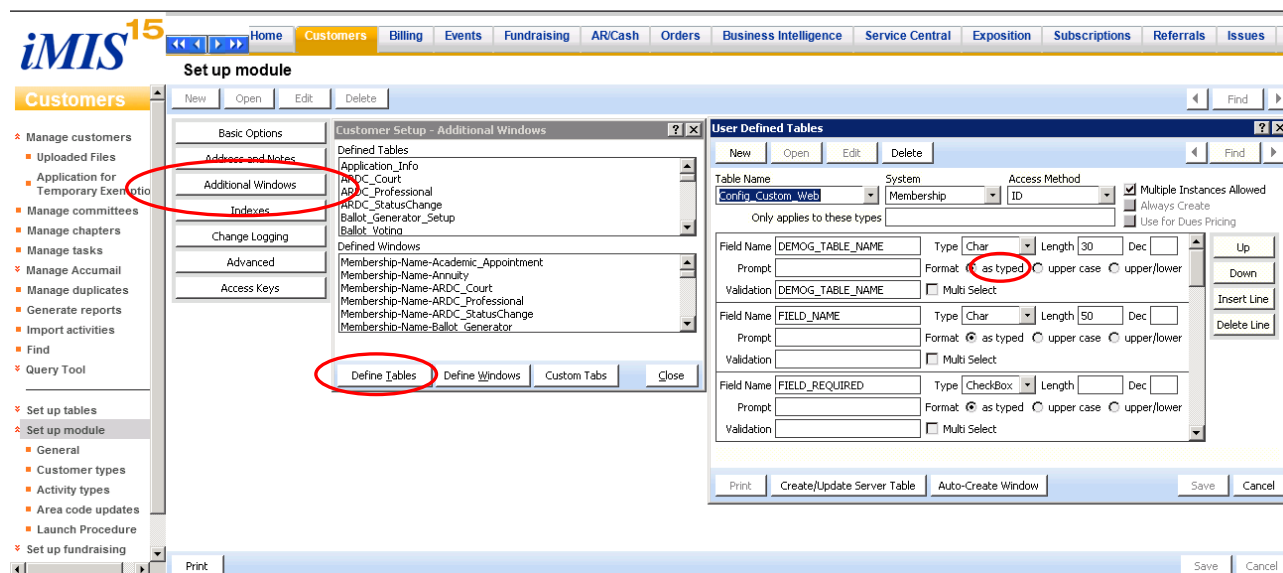
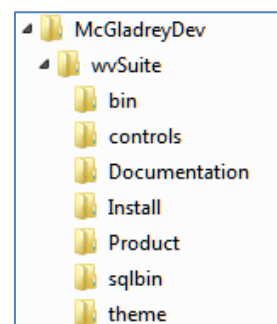
*iMIS* is a trademark of Advanced Solutions International, Inc. All products mentioned herein are registered trademarks of their respective owners.

McGladrey LLP  
191 N. Wacker Drive Suite 1400  
Chicago, IL 60606

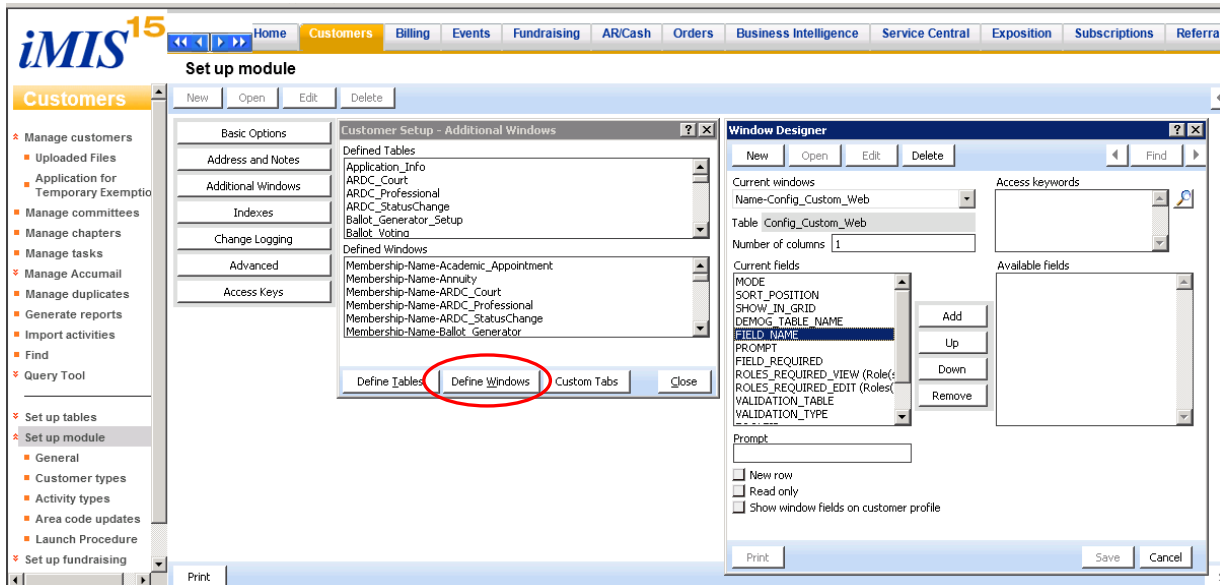


## Installing wvSuite

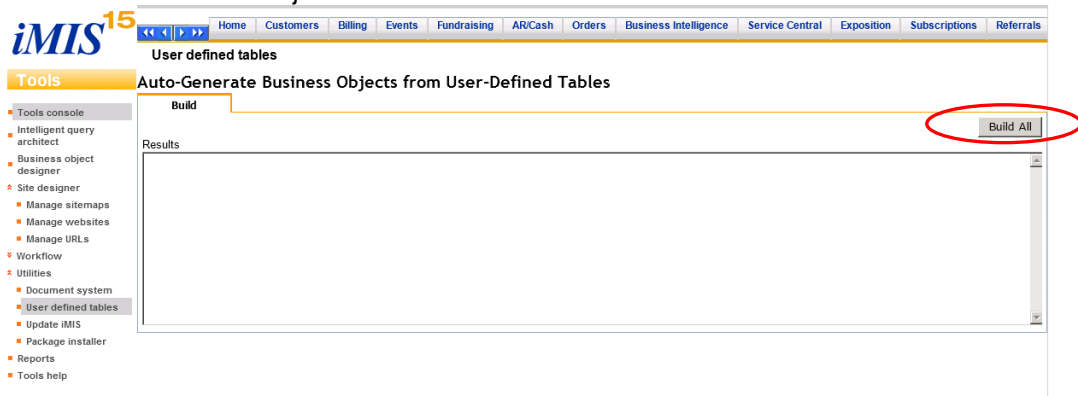
1. Create folder C:\McGladreyDev\wvSuite on the App Server
2. Unzip the wvSuite.zip file provided by McGladrey to C:\McGladreyDev\wvSuite on the App server. You should see the folders shown at right.
3. Copy C:\McGladreyDev\wvSuite\sqlbin\RSMSQLCLR.dll to C:\McGladreyDev\wvSuite\sqlbin\ on the SQL server.
4. Copy the file in wvSuite\theme to Net\App\_Themes\BlueWave and the theme folders for any other sites where you will use wvSuite.
5. Using SQL Server Management Studio, sqlcmd or another SQL query tool, open and execute Install\wvSuite\_Install.sql and review the results. If you encounter any errors, resolve them before proceeding.
6. Log into iMIS desktop as MANAGER or another system administrator to create required User Defined (UD) tables.
  - a. Customers > Set up module > Additional Windows
  - b. Define Tables
    - i. Select Config\_Custom\_Web
    - ii. Click on the “as Typed” on the first field
    - iii. Save



- c. Define Windows
  - i. Select the window called Name-Config\_Custom\_Web
  - ii. Select a field, click up, click down
  - iii. Save



- d. Rebuild Business Objects for UD tables.



7. Stop the ASIPublishing15 service.
8. Copy the following files from wvSuite\bin to the web server's Net\bin folder.
  - a. wvSuite.dll
  - b. wvSuite.pdb
  - c. McGladrey.Library.dll

Upgrade note: if you have a previous version of wvSuite installed, you may have a file named RSM\_Common.dll. This should be deleted.

9. Create an RSMWebViews folder in Net\iparts.
10. Copy all the .ascx files from the Controls folder to the web server's Net\iparts\RSMWebViews.
11. Start the ASIPublishing15 service



12. If you have multiple application servers, repeat from step 7 for each additional server
13. Log into *iMIS* staff view as MANAGER or another content administrator; go to Content Management > Maintenance > Content Types. Import the .xml files from the Install folder
  - a. WvSuite\_Install.xml (*Required*)
  - b. WvSuite\_Examples.xml (*Optional*)
14. Go to Tools > Business Object Designer and publish WvSuiteActivityTypes and WvSuiteRelationship
15. Go to Tools > Manage Sitemaps, choose *iMIS* Web View, highlight the System Setup item and click Publish.
16. Go to System Setup > RSM Configuration, paste in any license keys and save.